

St. Luke's Church, Ramsgate.

Annual Report

for the year ended
31st December 2016



In 2016, St. Luke's celebrated 140 years since the building was opened. It was fascinating to look back over the whole history and to see how the gospel as given in the Bible has remained central throughout that time. This report records just one year of our life together, but do use it to guide your prayers, both in giving thanks for all God has been doing with us and to pray for the future flourishing of our work and ministry to Ramsgate.

Do join us on **Monday 3rd April at 7:30pm** in church for our Annual Parochial Church Meeting to find out more and hear about our plans going forward. If you want to take a more active role in the oversight of the work of St. Luke's why not also consider standing to become a member of the PCC either as a regular member or Deanery Synod Representative. You can find out more about what is involved on the noticeboard in the coffee area.

Do also read our Vision 2017 document, which celebrates some of the new developments of 2016 and plans for 2017.

Paul Worledge (Vicar)

Contents

Page 2	Reference and Administrative Information
Page 3	Structures and Organisation
Page 5	Achievements and performance
Page 10	Minutes of last year's APCM
Page 12	Reports (Electoral Roll, Buildings, Hall etc.)
Page 15	Financial Review and 2016 Accounts etc.

Church Address:
St Luke's Church
Corner of Hollicondane Road,
Ramsgate
Kent

**Independent
Examiner:**
Mr. Peter Cottingham
81 Dane Crescent
Ramsgate CT11 7JS

Church Office: (part time)
St Luke's Church Hall
St Luke's Avenue
Ramsgate
Kent
CT11 7JX

Bankers:
CAF Bank Ltd.
25 Kings Hill Avenue
Kings Hill
West Malling
Kent
ME19 4JQ

CCLA Investment Management Ltd.
The CBF Church of England Funds
80 Cheapside
LONDON
EC2V 6DZ

Reference and administrative information

St Luke's Church is situated on the corner of Hollicondane Road and St Luke's Avenue, Ramsgate. It is part of the Deanery of Thanet, in the Diocese of Canterbury, within the Church of England.

The Parochial Church Council was registered with the Charity Commission on 25th October, 2010. Registration No: 1138535.

PCC members who have served from 1st January 2016 until the date this report was approved are:

<i>Incumbent:</i>	Rev. Paul Worledge	Chairman
<i>Wardens</i>	Mr. Andrew McMillan	
	<i>Vacancy</i>	

Representatives on the Deanery Synod:

Mr. John Neden
Mr. Peter Shakeshaft

Elected members:

Miss Joy Brenchley
Mrs Pauline Emptage
Mrs Anne Marsh
Mr David Perkins
Mrs Audrey Tucker
Mr John Galer
Mrs Pauline Mackinney (Elected at 2016 APCM)
Mr Christopher Waldie (Elected at 2016 APCM)
Mr Michael Isaac (Elected by PCC just after 2016 APCM)

Co-Opted Members:

Capt. Peter Bone	
Mrs Hazel Kenney	Treasurer (Co-opted)

Aims and Purposes

St Luke's Church PCC has the responsibility of co-operating with the incumbent, the Revd Paul Worledge, in promoting in the ecclesiastical parish the whole mission of the Church, pastoral, evangelistic, social and ecumenical. It also has responsibilities for the maintenance of the St. Luke's church building and church hall. The hall is situated next to the church building in St. Luke's Avenue, Ramsgate.

Objectives and activities

The PCC has overall responsibility for maintaining the worship at St Luke's. The PCC continually assess the services available and make suggestions for ways to involve people within the parish. The PCC has considered the Charity Commission's guidance on Public Benefit with regard to the advancement of religion. In this respect, the PCC maintains both the Church building and the Hall. Awareness of religious belief is encouraged through regular services which include teaching, reading scripture, prayer and music. Teaching is provided for children both within the church, and through local schools. The PCC seeks to provide information of its services on a regular basis to those within the parish. Church members are encouraged to live out their faith within the community through: worship and prayer, visiting the sick, providing pastoral care, and missionary and outreach work.

Structures and Organisation of St. Luke's

PCC of St. Luke's

The PCC is the Parochial Church Council of St. Luke's church. Members include the vicar and those elected at the Annual Parochial Church Meeting by those who are on the church electoral roll. It has responsibility to oversee the running of church life and the churches mission in collaboration with the vicar and has a legal responsibility to oversee the upkeep of the church buildings and the running of the church finances.

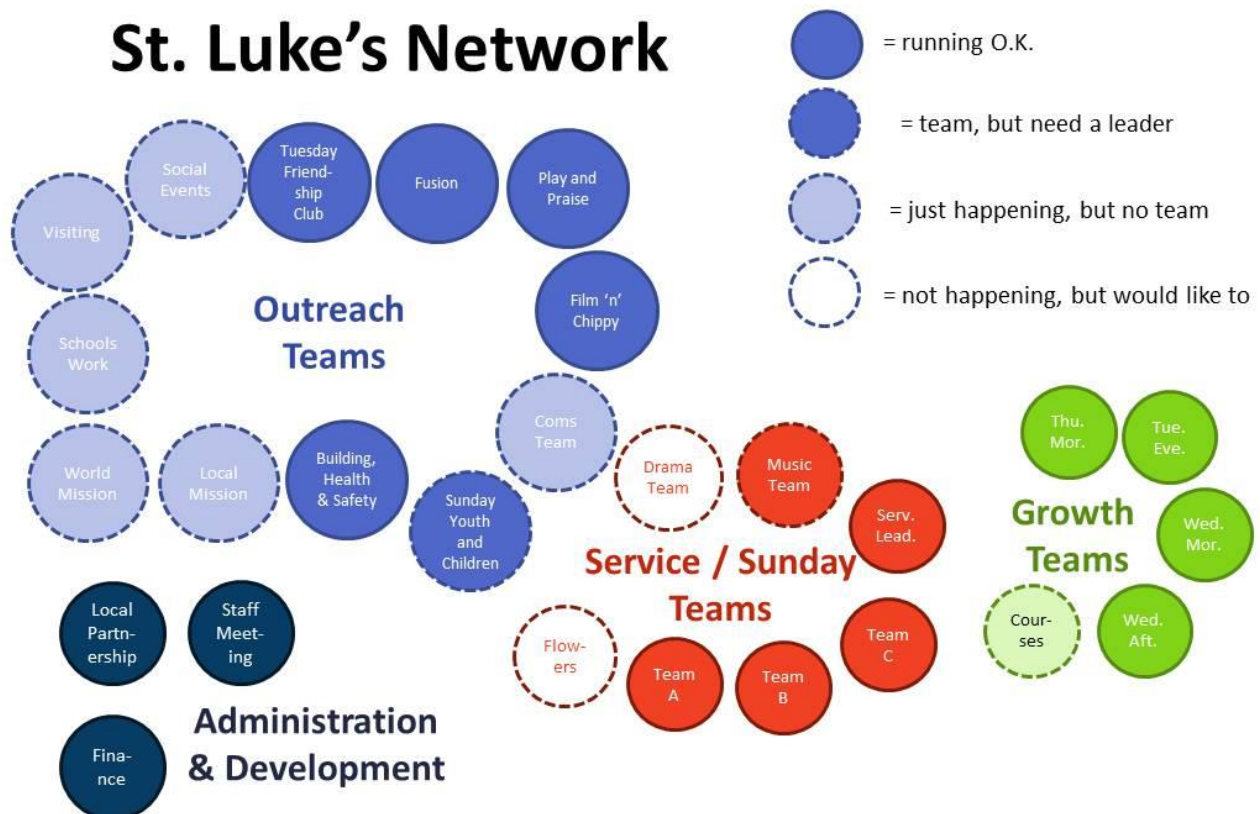
PCC Policies

As well as setting a budget each year, the PCC annually reviews a number of policies to ensure that we are meeting our legal responsibilities to care for the people who we work with. These include:

- Parish Safeguarding Policy
- Health and Safety Policy
- Data Protection Policy
- Financial Risk Assessment Policy (New in June 2016)

The Network of Groups at St. Luke's

At St. Luke's we aim to encourage people to work together in teams to support our work. There are basically four types of teams. **Outreach Teams** work to help share God's love and word with the world around in a variety of different ways. **Service / Sunday Teams** these work to help make sure our Sunday services run smoothly and well. **Growth Teams** these are groups that meet together, usually weekly, to support one another in our Christian growth through Bible Study, prayer and deepening friendships. They are also supplemented by a number of courses. All of this is supported by a few **Administration and Development Teams**. Some of these teams are running well, others are just ideas. The chart below list all of the different teams along with one or two we'd like to see develop: (the next page gives a few more details of some of the teams).



Outreach Teams

Here is a list of our Outreach Teams:

Play and Praise: We run a group on Friday mornings for parents / carers and their babies or toddlers.

Fusion: We run a group on Friday evenings for those in school years 6-11.

Tuesday Friendship Club: This is on Tuesday afternoons in the hall. All are welcome.

Film 'n' Chippy: This is a new Outreach Team set up in 2016 to reach men. Roughly once a month the men gather in church to eat fish and chips, watch a film and have a discussion about it.

Buildings: We long to use our buildings as places for the local community. This team works to ensure our buildings can continue to provide that resource in a safe way.

Sunday Youth and Children: As part of our Sunday morning service we offer groups for children aged from 0-14. This requires a dedicated team of leaders and helpers who work to provide fun and engaging teaching about the Christian faith for our youngster.

Please see page 9 and 10 for more information on Outreach Teams that we would like to see set up and on the **Pastoral Care Team**, which ran for most of 2016, but whose work we are hoping might be covered by some other Outreach Teams.

Growth Teams and Courses

As a church we want people to grow in their faith so that they are better equipped to live for God and grow into a deeper relationship with God. Obviously we try to do this on Sunday mornings, but we also have groups that meet together during the week to encourage, support and pray for each other. As part of their time together the teams do some deeper study on the topic for the previous Sunday. During 2016 there were three Growth Teams running in the daytime and one in the evening.

We also run regular courses to supplement the Growth Teams. In 2016 we ran a daytime *Christianity Explored* starting in January and a new course called *Life Explored* on Sunday evenings starting in September. These two courses are primarily aimed at those new to or exploring the Christian faith. Peter and Lynne Bone also led the Church Army's *Faith Pictures* course, which equips people to speak about their faith more confidently and effectively. We also had a series of talks by Robin Plant called: *How to Like the Old Testament Again: The Prophets for Everyone* in November. We also welcomed people from other churches to this course.

Sunday Teams (Previously Service Teams) and Service Leaders Team

The church is very reliant on the willing help of Christians who want to serve one another. For our Sunday morning services to run effectively we need a team of people to carry out a number of different tasks.

There are three Sunday Teams that operate and work to serve the church on a three-weekly rota, covering a number of different tasks including: welcoming, refreshments, the sound desk, the projector, counting the money and hoovering. Each team aims to support one another in this important task and provide a warm welcome for everyone who joins us on a Sunday morning.

We are also grateful to our singing group for leading our music each week.

During 2016 we also gathered a team of people to lead our Sunday services. This team includes a few people new to leading services. We meet every couple of months, for support, encouragement and training.

Achievements and Performance

Sunday Services

Services are provided on a Sunday at 10.30 a.m. and 6.30 p.m. There is also a 9.00 a.m. Holy Communion service following the Book of Common Prayer, on the first Sunday of each month. On the third Sunday of each month the 10.30am service is a family communion service, and there are also evening communion services twice a month. During 2016 we averaged 63 adults and 27 under 16s on a Usual Sunday.

Pastoral Services (Baptisms, Funerals and Weddings)

In 2016 there were 12 funerals taken by the vicar. Three of these were held in church. For the second year running we held a Service of Remembrance on the day before Christmas Eve and invited all those for whom funerals had been taken during the year. This year there was a very large attendance with many of the 12 funerals represented.

There were four wedding services held at St. Luke's. In March a special event called, 'A Space to Think' was held for those being married at St. Luke's to help them think through the meaning of their marriage vows and their future lives together.

In May four members of St. Luke's were confirmed at a Deanery service held in the church. All the candidates had been through a Christianity Explored course and a confirmation preparation course. One of the candidates was also baptised.

13 children were baptised during our normal Sunday morning services. When a child is baptised the parents and sometimes the godparents receive baptism preparation during a couple of home visits.

Special Events in 2016:

Bombing Centenary

On Sunday 20th March, we had a special service to celebrate the 100th centenary of the bombing of some children on their way to Sunday School at the church. The bomb killed 7 children and a few adults.

The commemoration included a banner and work carried out by children from Newland's School and each name of the children who died being read out by a child of the same age in the service today. The service was attended by the Mayor of Ramsgate.

Queen's 90th Birthday

On Sunday 12th June we had a special Café Church service to celebrate the Queen's 90th Birthday. After the service there were party cakes, bubbly and a best hat competition.

St. Luke's Sport's Day and BBQ

On Sunday 26th June we had a min-sport's day after the service with a BBQ. It was a fun occasion with a number of families attending.

140th Celebration

On the weekend of 5th and 6th November we had a special weekend at St. Luke's celebrating 140 years since the opening of the building. We had a prayer day on the Saturday, which began with the Churches Together in Ramsgate prayer breakfast and included a Prayer Space installed by Trevor Clarke. On the Sunday we had a special Sunday celebration services. Our preacher was John Dunnett the General Director of CPAS our patrons. The service was followed by a special lunch in the hall.

How to like the Old Testament Again

In November 2016 on Tuesday evenings in church we held four sessions called, 'How to Like the Old Testament Again.' This was similar to the sessions held last year, but this time the focus was on the four Major Prophets: Isaiah, Jeremiah, Ezekiel and Daniel. These were led by Robin Plant and attended both by people from St. Luke's and other churches in Thanet.

Children's Work (Nicky Shakeshaft)

St Luke's Sunday Club currently has 34 children enrolled; this is up on last year's numbers with several more children who have attended as visitors (e.g. Baptisms). The Sunday Club is divided into three groups: Scramblers (Reception and the year before), Climbers (years 1 and 2), and Explorers (years 3, 4, 5). Our main aim is to help the children understand God's word, His amazing gift to us all of Jesus, His Son, plus His surpassing love for all people, especially children.

We have approximately 45 minutes during the weekly service for Sunday Club. We all meet in the Vestry for a short sharing of news and sharing of what we are thankful to God for during that week. The children are encouraged to pray out loud at an early age so this becomes natural to them.

We split into our different groups and spend 30 minutes on Bible teaching, discussion and linked craft activities. For the younger children, we use story sacks and story boards to help them be an active part in their Bible learning.

This year we have decided it would be a good idea to teach the children the same lesson as the sermon the adults are given. We are now aiming to do this 50% of the time. This gives the parents and children the opportunity to discuss further at home. New material, called *Mustard Seeds*, from *TnT Ministries* have been purchased and Sunday club teachers are able to download these and print off lessons and activities.

Sunday club sponsor a child called John through the charity Compassion. The groups are encouraged once a month to think about what his life is like and to write a short letter to help our designated leader to compile a package to be sent to him. We pray regularly during our prayer time for him to grow in God's love, and the children bring in donations to put towards his sponsorship.

We have been encouraged this year to have more helpers. We currently have 5 Sunday club teachers and 4 helpers who rotate termly, ideally we would like 6 of each. This then enables Teachers and helpers to be able to stay in church more. We do not at this time have an Overall Sunday Club Leader but hope to have some meetings to discuss the role and pray we will get the position filled soon.

Sparklers (Fiona Worledge)

Children aged 0-3 currently meet in the church hall. We follow the same structure every week which enables small children to pick up on a routine and feel that they know what will happen next. Every week we have a Bible story, craft, songs and prayers. It is a privilege to introduce young children to Jesus, but we see ourselves as supporting the work that parents are already doing in the home.

Play & Praise (Fiona Worledge)

Play and Praise is a parent and toddler group which meets on Fridays 10.00-11.30 during term time. The children have time and space to play with other children. There is always some kind of craft, a Bible story/theme and a prayer that we all say together.

We ask for £2.00 a week per family, and this pays for the food needed for snack time, coffee, tea, craft materials and gifts for the children at Christmas and Easter. This Easter the children will receive a "Real Easter Egg" from Traidcraft which tells of the Easter story. Last year Play and Praise donated a total of £308.50 to the church hall fund and Children in Need.

The group continues to be well attended and we aim to share the love of Jesus with everyone who comes. Play and Praise provides an important link between community and church with many of the families also coming to church. We thank God for all the encouragements we have had and look forward to another year serving Him.

Fusion (*Trevor Kenny*)

It has been another busy and successful year for the youth group. Attendance has been between 24 – 40 children. At one stage this year, a limit had to be put on new members, when we hit the 40 children on a regular basis, as it was felt that we were on the limit as far as leaders were concerned and we had 60 members on the books at that point. It is expected that the limit will be removed again in January 2017.

Whilst there is a good core of regular attendees, there is a few that attend irregularly. Whilst the format has been modified slightly throughout the year, it has been consistent over the last few terms. This involves various games that can be played, from 19:45 hrs. These range from football, snooker, board games and computer games to name a few (a new table tennis table being a major purchase.) After 45 minutes, we have group bible teaching for 10 minutes, 3 different bases which the children alternate between over the next 20 minutes, summing up of the teaching for a further 10 minutes and finishing with a “Big game”, where everyone can join in and occasionally battle against the leaders. At 21:30 they are released back out to their parents.

Throughout the year there have been several field trips, including a climbing wall, two different laser quest venues and bowling. There is still a real struggle to get enough leaders for a Friday night, however, we give thanks that we seem to have managed and not felt vulnerable or unsafe.

It is still a key group for outreach, with probably over 75% with no regular connection to the church at St. Luke's, and possibly over 50% with no church connection at all. Ideas are always being sought as to ways of interacting with the families of children who attend.

It has been very encouraging that we have had a boost to our leaders meeting that we hold for an hour and a half before the youth group, where we study the passages for the evening. The older members (16 years old) have been invited to join in, and all have benefited from the experience.

Material for the evenings has varied from looking at the lesson to be preached in the Sunday sermons, characters in the Old Testament and in January 2017 we will take a tour through St John's Gospel.

St Luke's Men's Group (Film 'n' Chippy Night) (*Trevor Kenny*)

In November 2016, the men's group was restarted. The format has taken the form of a “Film and Chippy Night”. This idea was brought to St Luke's by Peter Bone, from a previous group he ran in Skelmersdale. We have had a couple of very successful evenings with both involving about 8-10 people, some of which were not the same, so we have reached about 12 people. It has been encouraging to have such a good response at an early stage. A discussion is held after the film, which is part of the plan to encourage relationships between the men within the church family. This has been a good initial couple of meetings and a couple of completely different films, which we have shown in the church building. The fish and chip shop we use have also been great and very helpful. The age range is from 16 with no upper age limit. It is hoped that as people get used to and more familiar with the group it can be used as a form of outreach, to invite men who possibly do not have regular contact with the church. Early in January, a visit to a local cinema is planned, which is hoped will be funded by donations, increasing some variety within the group meetings.

The wider picture is to perfect and improve the basic model we are using, so that it can be offered to other churches to set up similar groups. Hopefully this will provide the possibility in the future of combining groups for one off special rallies or events involving other churches as well as St. Luke's and so growing a community, but also offering outreach.

Tuesday Friendship Club *(Fay Hatton)*

The T. F. C. takes place on Tuesdays in term-time from 2pm-3.30pm in the Church Hall. We are open to all who wish to make new friends, pursuing new interests and activities in an atmosphere of support and friendship.

We enjoy refreshments usually before the week's activity, and sometimes we hold an afternoon tea with a social chat-time instead of an activity. We were given a lot of wool and craft-board so we can make greeting cards, which we sell in church to help with the church expenses. We have also knitted or croqueted some small blankets which were donated to Cats in Crisis, and Pauline made articles such as aprons, etc. which were sold to boost our funds.

Normally we have visiting speakers on the last Tuesday of each month who have worked in Fire and Rescue, the Paramedic Service, Age U.K., R N L I , and assorted Ministerial speakers etc. We have also had cake decoration advice, the history of our church and the making of chocolate. Recently we have been shown how to make trees, hearts, angels, houses, out of the folded pages of a book. This was incredible and quite an eye opener!

We are outward-looking, welcoming new ideas and all are interested in continuing to form this happy group, and eager to learn from new speakers and even new members. You can be sure of our support and friendship, so please do come and join us any time you have a Tuesday afternoon free.

Growth Teams

Throughout 2016 Growth Teams have met to pray, encourage one another and discuss the sermons on the preceding Sunday, some teams meeting weekly, some fortnightly. Four groups have met through 2016 (Tuesday evenings, Wednesday mornings, Wednesday afternoons and Thursday mornings). Here are some comments from one of our Growth Teams:

Wednesday Morning Growth Team

Our Growth Team has eight regular members and room to welcome more to our group. We meet weekly throughout the year (except during August). We praise and thank God for His wonderful love and for His many blessings to us, as a group, during this past year. All members of the group have family or friends with various needs, some have suffered bereavements and many have personal health problems but all have felt Jesus' love and peace surrounding them. We have been able to help and sustain each other through studying God's Word, sharing the needs and joys of our families and friends, through much prayer and loving support. We rejoice in Jesus' wonderful example of love and are honoured to be able to support 'Tearfund' as they work amongst suffering people throughout the world. We praise God for His wonderful love and pray His Holy Spirit will continue to guide us and help us grow closer to Him and to one another. We pray God will enable us to be bold and use the opportunities He gives us to share our faith with others.

We feel more and more the desire to praise and thank God for everything throughout each day and to ask Him to help us pray according to His will. During the coming year we shall spend time reading and studying the book of Ephesians when there are no official Growth Team studies.

"Praise be to the God and Father of our Lord Jesus Christ, who has blessed us in the heavenly realms with every spiritual blessing in Christ." Ephesians 1:3

Prayer Groups

Prayer is seen as being of utmost importance in the life of St Luke's Church. As well as the prayers said during our church services and Growth Team meetings, there is also an extra weekly prayer meeting and a prayer time before the beginning of the church service on a Sunday morning. The weekly prayer meeting is at 3:30pm on Thursday afternoon. All are invited to join us at any of these prayer meetings.

Pastoral Care Team

The Pastoral Care Team met once every two months through 2016. Its aim was to consider the wellbeing of the church members. It also thinks of those who may need a home visit for any reason.

The team has organised welcome parties for new church members and social events where they can get to know the church family. This year we also tried running a *Grave Talk* session on a Tuesday afternoon, but the attendance was very disappointing.

We have started to help people with lifts to church services on a rota basis if any car drivers could volunteer to give lifts on a one off or regular basis to church. Please see a member of the team. We take Communion to the Ramsgate Care Centre once a month and organise the collecting and delivery of food to the Thanet Food Bank. This food is very welcome.

Unfortunately, as the numbers on the committee have dropped it was decided to end this group and look to see if new groups can be set up to focus on different aspects of the work in the future. There are three possible teams that could be developed:

- **Local Mission Team** (which would include work with the Food Bank and helping support our links with other local cross-church mission like the Thanet Winter Shelter).
- **Visiting Team** to help run a programme to better organise and make effective the visiting of church members along with organising lifts etc.
- **Social Events Team** to run a programme of events through the year to try and bring church members together and build friendships and relationships.

We would like to take this opportunity to thank Audrey Tucker for chairing the Pastoral Care Team and others who have helped out on the team over the last few years and to Audrey and others who continue to ensure that many of the aspects of its work continue.

World Missions Supported

It is the policy of the PCC that each term provides both prayerful and financial support for one of its designated mission societies. Members of the church are also given the opportunity to financially support these missions in a 'planned' way throughout the year. Tax is reclaimed, where Gift Aid declarations have been completed, and the proceeds sent to the relevant society usually twice a year.

During 2016 we supported the following missions:

- Fegans
- CPAS
- CMS – The Seeds
- Greg & Sylvia Venables
- Compassion – Children work support
- Bible Society
- Tearfund
- Vernon Wilkins
- Our Harvest collection was Compassion - for water.

Harvest Appeal 2016

Every year we support a different project with our Harvest Appeal. This year we chose Compassion's *Water of Life* appeal, which works to provide children with safe water around the world. We raised over £2,110.

We would like to see a **World Mission Team** formed to help promote and encourage this work.

Website

We use *Weebly* as our website platform. The website provides information about all our activities along with contact details, the ability to access our weekly newsheet and recorded sermons. It also links to a church Facebook page and Twitter account. It would be good if the running of the website along with other means of communication could be co-ordinated by a **Communications Team**.

Schools Work

We continue to have good links with Newlands School. Key Stage 2 usually come to the church building for their festival assemblies: Harvest, Christmas and Easter, whilst the vicar goes to the school to take festival

assemblies for Key Stage 1. In the summer we present the Year 6 pupils with Scripture Union *It's Your Move* books, which give advice as the youngsters prepare to leave Primary School and start Secondary School.

We also in co-operation with a number of other local churches to run *Christmas Unwrapped* and *Easter Cracked* for Year 6 pupils across Thanet. At St. Luke's we host three schools for these events: Newlands School, St. Lawrence College and St. Ethelbert's. These events are 90 minute interactive programmes that help to explain the true meaning of these festivals.

One idea for the future is to set up a **Schools Work Team** to look at how we might be able to expand on our work with schools.

Minutes of the Annual Parochial Church Meeting held on 17th April 2016

Present: The Vicar and 24 persons.

Apologies were received from Fay Hatton, Jean Simmons and David Perkins.

Welcome and Prayer: Paul welcomed those present, quoting 1 Tim. 3:15 stating that we are ambassadors for Christ in our Community. Prayer followed. The reading was taken from Exodus 13 "The Golden Calf". In this passage Moses has gone up into the mountains for prayer. Aaron is left and allows the people to build a golden calf which they worship. When Moses comes down from the mountain he rebukes the people and says that leaders should listen to God and encourage their people to do so. Aaron blames the people for the sin in building the calf rather than himself for listening to the people's complaints rather than acknowledging his weakness in giving into the people. Moses pleads before God for their forgiveness. The difference for us today is that we have already been forgiven because of God's son, Jesus, giving His life for us by dying on the cross.

Minutes: The Minutes of the meeting held on 7th April, 2015 were accepted with no matters arising.

Reports:

Electoral Roll: It was noted that the membership on the Electoral Roll had increased this year.

The following reports were all accepted with no comments.

Deanery Synod

PCC

Church Fabric.

Finance

The Treasurer said that the Church was struggling to meet its commitments. There had been no significant increase in giving during the year and there was a need for an additional £20,000. It was noted that there should be at least 3 months' income held in reserve. Hazel confirmed that the Diocesan quota had been paid in full this year but if income drops this may not happen in the future. Discussion ensued and it was suggested that perhaps the expense of running the Church and hall should be pointed out to the congregation.

It was proposed by Audrey Tucker, seconded by John Galer and agreed that the reports be accepted. Paul thanked those who had prepared the reports. There was a time of prayer giving thanks for the work of the Church over 2015.

Elections and Appointments:

Church Warden: Andrew McMillan, proposed by Cathy Forrest, seconded by John Galer and duly appointed.

PCC: It was noted that a third of the membership was elected each year. Nominations were as follows:

Audrey Tucker: nominated by David Perkins, seconded by Peter Ovenden and duly appointed.

Christopher Waldie: nominated by Jean Hann, seconded by Vanessa Shingles and duly appointed.

Pauline McKinney: nominated by Fay Hatton, seconded by Jean Simmons and duly appointed.

Independent Examiner: It was agreed that Peter Nottingham be appointed.

Report on the Ramsgate Conversation:

Paul reported that there were 9 churches in Ramsgate and a day of prayer had been held on Ascension Day. The Vicar of St. Mark's retired in June 2016 and they also have financial problems. The 3 Churches in the centre of Ramsgate – St. Luke's, St George's and Holy Trinity – each have a Vicar, Church buildings to maintain and are struggling financially. Two of these clergy may retire in a year's time. CPAS have held a special meeting and have a total of 70 clergy vacancies across the country. This particular challenge has not been faced before. The number of people attending Church has dropped nationally. We are doing well in comparison but do face financial challenges.

Aims for 2016/17 – “Let's Talk”:

“Going Deeper” in God's Word – OT Course to be repeated.

“Youth” Encouraged by the number of young people attending Fusion on Friday evenings

Growing Leaders' Course to be commenced with mature Christians monitoring trainees.

Wider: Encourage to talk about our faith. The Church Army “Dream Team” is a resource which helps people to discuss their faith and get support from one another.

Together: Suggested that there should be additional social gatherings where we can meet together.

Discussion ensued as follows: young people to be encouraged to come on to the PCC; could the Church be used more effectively; how can we encourage people to attend more regularly? Could a music/drama group be formed?

Group Discussion

Discussion in groups followed with the following suggestions being made:

- a. Encourage more people to join growth teams by members telling what happens at meetings during Family Services.
- b. Outreach group to be formed to arrange social activities to draw people in.

Paul closed the meeting in prayer.

Reports

Electoral Roll

This year 6 names were removed from the electoral roll and 7 names were added. The number on the electoral roll now stands at 79 of whom 34 are resident within the parish.

Deanery Synod Report

There were two Deanery Synod meetings in 2016. The first one gave a review of the discussions that had been taking place in each of the 4 areas of the Deanery (Ramsgate, Broadstairs, Margate and the Villages). It picked up on some themes that had emerged from these conversations across the Deanery:

- i. A need to engage with communities in which we are placed.
- ii. A particular focus on the ministry to children and young people and developing our links with schools.
- iii. A need to engage with the elderly.
- iv. A greater willingness to work together in ministry and mission and identify ways in which we can better share resources.
- v. A need to identify how we might make better use of our church buildings.

We also learned of the launch of the Church Army's Dream Team and the commissioning of Debbie Ellidson and Stuart Budden for a pioneering project in Ramsgate Town Centre, based in St. George's Church Hall. Both of these had very positive starts as was reported at the second Synod meeting in October.

At this meeting we also had a presentation from the Diocesan finance team on stewardship and how the Parish Share works.

Paul Worledge, Vicar

PCC Secretary's Report

Unfortunately, during 2016 our PCC Secretary Joy Brenchley has had a number of health issues, so has been unable to make most of our meetings. We are grateful to Pauline Emptage and John Galer who have both stepped in to take minutes.

We had 6 regular PCC meetings and two small ones (to agree things that needed agreeing quickly). The PCC has oversight of our churches buildings and finances (see the following reports), but also works to develop the general direction and strategy of the church and reviews policies. It is chaired by the vicar.

During the early part of the year, there were discussions with St. Lawrence College about the possible joint use of our buildings. After a few meetings, it was agreed that although we were open to working in partnership with St. Lawrence and would welcome occasional uses of our building by them, there was not at this time scope for a major change in ownership or joint development of the buildings. We did however welcome St. Lawrence College to use the church for their speech day in June. They provided additional seating in the church, which ended up seating around 700 staff, students and guests.

Paul Worledge, Chair of PCC

St Luke's Church Fabric Report for 2016

This report should be read in conjunction with the current Quinquennial report on the structure and fabric of the Church building, which as required was carried by an Architect out in 2012. A new Quinquennial report will have to be completed in 2017.

During 2016 as in other recent years we have faced various challenges with the care, repair and maintenance of St Luke's Church and the hall buildings. Whilst there is a continuing lack of financial resources we have tried to become more organized with a new maintenance schedule and work reports to help us keep track of necessary works.

This year St Lawrence College used St Luke's Church for their Presentation and Speech Day in the summer.

Representatives from St Luke's Church have taken part in some meeting organized by the Deanery to consider how Churches in Ramsgate can work together in the future linking into the condition of buildings and associated challenges faced for each church in line with how we meet the needs of our congregations and the wider population across Ramsgate.

During the 12 weeks of the winter season the church hall has been used one night each week as part of the Thanet Winter Shelter Programme providing a place to sleep for the homeless and associated support.

The church hall building has been very well used throughout the year, however this has highlighted the need for future investment in upgrading the gas heaters, toilets and kitchen areas.

The following building and maintenance and health and safety works were carried out during 2016:

1. Gas heating and equipment – inspection, service and minor repair.
2. Repairs to hopper and drainpipe beside vestry door.
3. Arrangements for work to unblock drainpipes and removal of plant growth on the North side of the church to be completed in March 2017 when it's hopefully dry.
4. Policy reviews were undertaken for St Luke's Health & Safety, Protection of vulnerable children and adults, Data Protection Risk Assessments.
5. A new fire risk assessment for the Church hall.
6. Thanet District Council inspected the Church Hall Kitchen
7. Kent Fire Brigade inspected the Church Hall prior to the start of Thanet Winter Shelter Programme.
8. A leaf blower machine was purchased from a donation which has saved time for other maintenance tasks.
9. The church hall floor has been re-varnished.
10. There have been continued maintenance issues with the hot water boiler and water heater in the church due to hard water and equipment breakdown. Kettles have been in use and there is currently a review of future possible solution being carried out including the purchase of a new urn.

11. Repairs were completed to fallen masonry from the roof of the church.

Chris Tull continues to be employed in the post of Gardener & Maintenance Worker.

At St Luke's we do thank God for the work of all volunteers and staff, Caroline and David Perkins, Chris Tull and the various contractors that have helped keep our buildings and grounds clean and tidy, maintained and improved as well as safe and welcoming.

We ask through our prayers that as we look to the work required in 2017 we are blessed with volunteers, finance, energy and enthusiasm to maintain the buildings and grounds that provide a venue for Your Church to meet together and praise You, our Provider.

Andrew McMillan, Church Warden

Hall Report

We have had another positive year with regards to the hiring out of our Hall, and thus were able again to transfer funds across to the main St Luke's fund, this was again necessary to top up the funds due to our financial deficit, and the ongoing maintenance of the Church. So, we do give thanks for this.

The Hall has been used for various charity events, all of which have had a good response from the Church family, and the public. Social services use our Hall 3 days a week, to assist the education and independence training for special needs young adults, and it is a blessing that St Luke's can play its part in this very rewarding and valuable service.

We have slimming groups on 1 morning and 2 evenings each week and in 2016 the Hall was also used by a Line Dancing Group for one or two evenings a week. Various regular church events and groups also run during the working week. So, I am very pleased to say that our Hall is an asset.

We were very encouraged when the winter shelter project approached us and asked if we would take part in giving overnight shelter for the homeless during the coldest months of the year, we were blessed because our hall met all the requirements needed to undertake this, and we were able to offer these guests overnight accommodation on every Wednesday night for 12 weeks, this was very hard work for all the volunteers, and came with its stresses but very rewarding, again we do give thanks to God for this opportunity.

I look forward to another positive year in 2017, and ask that you pray for the Hall's use to continue to flourish.

Pauline Emptage.

Financial Review 2016

General Fund: This fund includes all transactions concerned with the day to day running of the church, church building the cost of running services, outreach and both adult and child training. The largest commitment is the Parish Share, paid to Canterbury Diocese towards the cost of our vicar and various other Diocesan expenses and initiatives. The PCC always knew that 2016 would be a difficult year financially and resolved to pay the Parish Share as far as possible. It was agreed that if insufficient funds were available in the General Fund, then the Reserve Fund would be used, together with any surplus over £5000 in the Hall Fund. At the end of 2016 only 10 payments of 12 had been made towards the Parish Share. At the beginning of 2017, following receipt of some additional gifts, the PCC agreed to pay the two outstanding payments of Parish Share. Total amount paid for 2016 amounted to £51,794.

At the end of 2016, as a result of the above, the Reserve Fund was depleted. During the year the decision was made to amalgamate a number of smaller funds to create a new Church Building Fund with a balance of £5,000. This fund was to be held in reserve to cover any exceptional expenses incurred on the maintenance of the church building and grounds. At the end of 2016 it was decided to use money from this fund to fully pay the Parish Share, leaving a balance of only £640.20. The PCC plans to build reserves to a safe level in 2017 before making any further contributions to Parish Share. Additionally, a further £3,000 will need to be raised for essential repairs to guttering. Parish Share for 2017 has increased by 6% to £54,901.

Other large expenses paid from the general fund include the insurance premium of £3,097. The church building is only insured for 50% of its value due to the high cost of premiums. Our long-term agreement with Ecclesiastical Insurance Office expires in 2017 and alternative quotes will be obtained. Other expenses in excess of £1,000 include gas of £1,189, publicity £1,019 and working expenses of the incumbent £1,277. Total expenditure for the general fund amounted to £67,365.

The total income to the General Fund in 2016 amounted to £49,461. Income to note includes, £31,207 from our planned giving scheme, £7,155 reclaimed from the taxman, £8,290, from loose plate collections and one off donations, £1,304 from other donations and a grant from the Diocese and £1,481 received as fees from weddings and funerals.

At the end of 2016 the PCC had only £4,805 of unrestricted cash available for the ongoing work into 2017. The PCC is kept fully informed of the financial position of the church and towards the end of the year holds a 'Commitment Sunday' to encourage members to consider God's goodness to us and review their level of commitment for the following year. The commitment Sunday in 2016 resulted in increased giving of around £3250 for 2017. It is hoped as new people join St Luke's further regular commitments will be seen to improve this further. The budget for 2017 predicts a deficit on the general fund of around £26,000.

The Diocese has been informed of our current position and the necessity to replenish reserves before paying our Parish Share.

Financial Risk Assessment Policy: Following the advice of our Independent Examiner this policy was written in 2016 and accepted by the PCC.

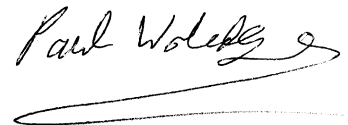
Finance Personnel: The PCC appoints its Treasurer at the first meeting after the Annual Church Parochial Meeting (APCM). In addition other personnel have been appointed to assist the smooth running of the church finances. These include a hall manager, responsible for bookings and

collection of rents for the church hall. A Utilities Manager, who oversees the utility bills. A Banker, a nominated person whose job is to collate all weekly money and pay it in. A second authoriser, chosen from the PCC, to check all electronic payments. Additionally, nominated people have been chosen to maintain the petty cash accounts that are held within the church.

Reserves Policy: It is considered good practice to hold three months of general expenses as a reserve fund. Based on 2016 this would amount to around £17,000. At the end of 2016 we had no reserve fund. Additionally, the PCC endeavours to keep £5,000 in the hall fund to cover ongoing maintenance and agreed that £5,000 should be held in a Church Building Fund for one off essential repairs to the church building. At the end of 2016 the Hall Fund stood at £4,164 and the Church Building Fund at £640.

Hazel Kenney
Treasurer to the PCC

St Luke's Church Ramsgate Accounts were approved by the PCC
on Sunday 26th March 2017 and signed on its behalf
by Rev. P. Worledge (PCC Chairman).

A handwritten signature in black ink, reading "Paul Worledge", with a long horizontal flourish underneath.

Independent examiner's report to the PCC of St. Luke's Church Ramsgate

This report on the financial statements of the PCC for the year ended 31 December 2016.

Respective responsibilities of the PCC and the examiner

As members of the PCC you are responsible for the preparation of the financial statements; you consider that the audit requirement under section 144 (2) of the Charities Act 2011 does not apply and that an independent examination is needed. It is my responsibility to:

- Examine the financial statements under section 145 of the 2011 Act
- Follow the procedures laid down in the general directions given by the Charity Commission under section 145(5)(b) of the 2011 Act; and
- State whether particular matters have come to my attention

This report, including my statement, has been prepared for and only for the charity's trustee as a body. My work has been undertaken so that I might state to the charity's trustee those matters I am required to state to them in an independent examiner's report and for no other purpose. To the fullest extent permitted by law, I do not accept or assume responsibility to anyone other than the charity and the charity's trustee as a body for my examination work, for this report, or for the statements I have made.

Basis of this report

My examination was carried out in accordance with the General Directions given by the Charity Commission. An examination includes a review of the accounting records kept by the PCC and a comparison of the accounts with those records. It also includes considering any unusual items or disclosures in the financial statements and seeking explanations from you as trustee concerning any such matters. The procedures undertaken do not provide all the evidence that would be required in an audit, and consequently I do not express an audit opinion as to whether the financial statements present a 'true and fair view' and the report is limited to those matters set out in the statement below.

Independent examiner's statement

In connection with my examination, no matter has come to my attention:

(1) which gives me reasonable cause to believe that in any material respect the requirements to keep accounting records in accordance with section 130 of the 2011 Act; and to prepare financial statements, which accord with the accounting records and comply with the requirements of the 2011 Act have not been met; or

(2) to which, in my opinion, attention should be drawn in order to enable a proper understanding of the financial statements to be reached.



P.E. Cottington
81, Dane Crescent, Ramsgate, Kent. CT11 7JS

14 March 2017

St Luke's Church Ramsgate
Receipts and payments
Selected period: 01 January 2016 to 31 December 2016

<i>Note</i>	From To	01 January 2016 31 December 2016	01 January 2015 31 December 2015
General - General fund (Unrestricted) Fund			
Receipts			
Planned giving			
Gift Aid - Planned Giving		24,705.00	25,570.54
Other planned giving		6,502.10	6,324.00
	<i>Total Planned giving</i>	<i>31,207.10</i>	<i>31,894.54</i>
Collections and other giving			
Loose plate collections		2,978.70	1,855.53
One Off Donations		5,311.00	9,795.95
	<i>Total Collections and other giving</i>	<i>8,289.70</i>	<i>11,651.48</i>
Other voluntary receipts			
Rummage sales etc		—	3.00
Donations		975.57	1,004.31
Recurring grants		328.65	24.00
	<i>Total Other voluntary receipts</i>	<i>1,304.22</i>	<i>1,031.31</i>
Gift Aid recovered			
Tax recoverable on Gift Aid		6,360.00	6,782.61
Tax recoverable from GASDS		795.37	792.90
Bank and building society interest		23.16	55.69
	<i>Total Gift Aid recovered</i>	<i>7,178.53</i>	<i>7,631.20</i>
Other receipts			
Other funds generated		—	353.97
Administration		—	59.04
Deanery contribution to Administrator		—	2,025.39
Electricity Refund		—	1,153.77
	<i>Total Other receipts</i>	<i>—</i>	<i>3,592.17</i>
Receipts from church activities			
Fees for weddings and funerals		1,481.00	2,521.00
Adult Training Income		—	4.00
	<i>Total Receipts from church activities</i>	<i>1,481.00</i>	<i>2,525.00</i>
Total receipts		49,460.55	58,325.70
Payments			
Missionary and Charitable Giving			
Donations to Charity		50.00	50.00
	<i>Total Missionary and Charitable Giving</i>	<i>50.00</i>	<i>50.00</i>
Parish Share			
Ministry parish share etc		51,794.00	49,800.00
	<i>Total Parish Share</i>	<i>51,794.00</i>	<i>49,800.00</i>
Clergy and Staffing costs			
Salary of parish administrator		4,258.83	4,079.94
Working expenses of incumbent		1,277.84	939.17
Working expenses of others		—	26.00
Visiting Speakers		115.00	—
	<i>Total Clergy and Staffing costs</i>	<i>5,651.67</i>	<i>5,045.11</i>

<i>Note</i>	From To	01 January 2016 31 December 2016	01 January 2015 31 December 2015
Church Running Expenses			
Costs of fetes & other events	—	130.32	
Parish training and mission	980.31	367.02	
Childrens Work on Sundays	130.41	216.95	
Publicity	1,019.44	424.19	
Church running - insurance	3,097.15	3,022.07	
Church office	688.16	953.07	
Church running - general	98.80	208.42	
Organ / piano /sound system / music	14.98	39.65	
Church maintenance	572.00	682.23	
PAT testing	—	43.00	
Fire Extinguishers	236.73	232.31	
Light Bulbs	—	242.41	
Equipment - church	—	104.28	
Subscription - Thanet Deanery Synod	125.00	125.00	
Subscription - Copyright Licence	708.48	700.52	
Subscription - Website	171.62	—	
Bank Charges	10.00	—	
Church running - electric	661.27	1,193.82	
Church running - gas	1,189.32	2,915.65	
Church running - water	165.86	164.91	
<i>Total Church Running Expenses</i>		<i>9,869.53</i>	<i>11,765.82</i>
Total payments		67,365.20	66,660.93
Excess of Receipts over Payments		(17,904.65)	(8,335.23)
Transfers to/(from)		17,904.65	8,335.23

St Luke's Church Ramsgate

Fund totals

Selected period: 01 January 2016 to 31 December 2016

Fund	Opening balance	Closing balance
Bible Society	44.90	18.70
Church Mission Society/SAMS	86.52	15.00
Church Pastoral Aid Society	96.35	80.22
Fegans	39.87	30.00
Mission - General	308.05	306.30
Sponsor A Child	50.59	(96.74)
Tearfund	764.53	569.64
Greg & Sylvia Venables	181.95	63.75
Youth	532.66	570.66
Hall	5,000.00	4,164.41
Maintenance & Development	4,109.82	—
Development & Building - Church	1,430.56	—
Reserve	6,676.02	—

Men's Work	28.11	28.11
Women's Work	61.05	61.05
Play & Praise	271.43	271.43
Social	113.32	—
Fixed Assets - Hall	667,916.00	674,589.00
Vernon	65.08	81.80
Gift Day 2013 - Outreach work	607.12	607.12
Youth - petty cash	65.92	22.16
Play & Praise - petty cash	93.06	52.86
Flowers - petty cash	50.00	13.00
Gift Day 2014 - Tech. & general funds	804.50	804.50
Tuesday Friendship Club	741.08	506.08
Tuesday Friendship Club - petty cash	7.77	27.03
Church Building Fund	—	640.20
Men's Group - Petty Cash	—	19.10
Christmas Unwrapped	—	119.01
Overall totals	690,146.26	683,564.39

St Luke's Church Ramsgate
Analysis of receipts and payments
Selected period: 01 January 2016 to 31 December 2016

	Unrestricted	Designated	Restricted	Endowment	This year	Total Last year
Receipts						
<i>Planned giving</i>						
Gift Aid - Planned Giving	24,705	—	1,233	—	25,938	26,743
Other planned giving	6,502	—	48	—	6,550	6,762
<i>Planned giving Totals</i>	31,207	—	1,281	—	32,488	33,505
<i>Collections and other giving</i>						
Loose plate collections	2,979	—	2,897	—	5,876	3,804
One Off Donations	5,311	—	2,372	—	7,683	11,589
<i>Collections and other giving Totals</i>	8,290	—	5,269	—	13,559	15,393
<i>Other voluntary receipts</i>						
Cash in Hand to Bank	—	—	1,009	—	1,009	1,236
Donations	976	459	2,232	—	3,667	2,145
Recurring grants	329	—	—	—	329	24
Rummage sales etc	—	—	—	—	—	238
Church hall lettings - fund raising	—	19,396	—	—	19,396	17,969
<i>Other voluntary receipts Totals</i>	1,304	19,855	3,241	—	24,400	21,612
<i>Gift Aid recovered</i>						
Tax recoverable on Gift Aid	6,360	—	1,059	—	7,419	7,468
Tax recoverable from GASDS	795	—	—	—	795	793
Bank and building society interest	23	—	—	—	23	56
<i>Gift Aid recovered Totals</i>	7,179	—	1,059	—	8,238	8,317
<i>Other receipts</i>						
Other funds generated	—	—	—	—	—	354
Administration	—	—	119	—	119	59
1306 - Deanery contribution to Administrator	—	—	—	—	—	2,025
Other Income	—	—	—	—	—	30
Petty Cash	—	—	3,039	—	3,039	4,076
Electricity Refund	—	—	—	—	—	1,154
<i>Other receipts Totals</i>	—	—	3,158	—	3,158	7,698
<i>Receipts from church activities</i>						
Fees for weddings and funerals	1,481	—	—	—	1,481	2,521
Adult Training Income	—	—	—	—	—	4
<i>Receipts from church activities Totals</i>	1,481	—	—	—	1,481	2,525
Receipts Grand totals	49,461	19,855	14,009	—	83,324	89,050

There may be minor discrepancies in the totals if the pence are not being shown

	Unrestricted	Designated	Restricted	Endowment	This year	Total	Last year
Payments							
<i>Missionary and Charitable Giving</i>							
Giving to missionary societies	—	—	6,483	—	6,483		4,817
Donations to Charity	50	—	—	—	50		50
Giving - relief and development agencies	—	—	—	—	—		1,437
<i>Missionary and Charitable Giving Totals</i>	50	—	6,483	—	6,533		6,304
<i>Parish Share</i>							
Ministry parish share etc	51,794	—	—	—	51,794		49,800
<i>Parish Share Totals</i>	51,794	—	—	—	51,794		49,800
<i>Clergy and Staffing costs</i>							
Salary of parish administrator	4,259	—	—	—	4,259		4,080
Working expenses of incumbent	1,278	—	—	—	1,278		939
Working expenses of others	—	—	—	—	—		26
Visiting Speakers	115	—	—	—	115		—
<i>Clergy and Staffing costs Totals</i>	5,652	—	—	—	5,652		5,045
<i>Church Running Expenses</i>							
Costs of fetes & other events	—	—	—	—	—		130
Parish training and mission	980	—	130	—	1,110		663
Training and Mission - Youth	—	—	851	—	851		892
Children's Work on Sundays	130	—	—	—	130		217
Publicity	1,019	—	—	—	1,019		508
Petty Cash Payment	—	—	3,122	—	3,122		4,046
Church running - insurance	3,097	—	—	—	3,097		3,022
Church office	688	—	—	—	688		953
Church running - general	99	61	—	—	160		208
Organ / piano /sound system / music	15	—	—	—	15		40
Church maintenance	572	1,136	—	—	1,708		934
PAT testing	—	—	—	—	—		85
Fire Extinguishers	237	—	—	—	237		232
Light Bulbs	—	—	—	—	—		242
Equipment - church	—	—	—	—	—		104
Subscription - Thanet Deanery Synod	125	—	—	—	125		125
Subscription - Copyright Licence	708	—	—	—	708		701
Subscription - Website	172	—	—	—	172		—
Bank Charges	10	—	—	—	10		—
Gardening	—	3,951	—	—	3,951		3,229
Church running - electric	661	—	—	—	661		1,194
Church running - gas	1,189	—	—	—	1,189		2,916
Church running - water	166	—	—	—	166		165
<i>Church Running Expenses Totals</i>	9,870	5,149	4,103	—	19,121		20,607

There may be minor discrepancies in the totals if the pence are not being shown

	Unrestricted	Designated	Restricted	Endowment	This year	Total	Last year
St Luke's Church Ramsgate							
Hall Running Costs							
Hall - Phone and Broadband		807		—	607		555
Hall running - electricity		778		—	778		814
Hall running - gas	—	2,981	—	—	2,981		2,197
Hall running - insurance	—	807	—	—	807		776
Hall - Running costs	—	1,115	—	—	1,115		1,187
Hall running - maintenance	—	1,945	—	—	1,945		693
Hall Cleaning	General	Designated	Restricted	Endowment	Total		Last year
	—	4,843	—	—	4,843		4,462
Hall running - water	—	166	—	—	166		165
Hall - Fire Extinguishers	—	237	—	—	237		232
Fixed assets - Tangible assets							
Hall - Equipment	—	—	—	—	—		23
Church Hall	—	—	674,589	—	674,589		667,916
Hall Running Costs Totals	Total						
	—	13,479	—	—	13,479		11,103
	—	—	674,589	—	674,589		667,916
Church Repairs & Maintenance							
Current assets - Cash at bank and in hand							
Church major repairs - structure	—	—	—	—	—		1,230
Bank current account	1,660	1,779	3,252	—	6,691		6,094
Church Repairs & Maintenance Totals							
Bank deposit account CAF	6,897	3,025	213	—	10,135		15,117
GOLD							
CCLA (CBF) deposit account	76	—	889	—	965		961
Payments Grand totals	67,365	18,628	10,586	—	96,579		94,089
Cash in hand	—	—	134	—	134		217
Total	8,632	4,805	4,489	—	17,926		22,388
Liabilities - Agency accounts							
Agency collections	—	—	318	—	318		158
Total	—	—	318	—	318		158
Liabilities - Creditors: Amounts falling due in one year							
Accounts Payable	8,632	—	—	—	8,632		—
Total	8,632	—	—	—	8,632		—
Net total assets	—	4,805	678,760	—	683,564		690,146

There may be minor discrepancies in the totals if the pence are not being shown

Notes to Accounts:

1. The financial statements of the PCC have been prepared in accordance with the Church Accounting Regulations 2006 using the Receipts and Payments basis.
2. Fixed Asset retained for church use is the Church Hall. Value shown as per insurance valuation March 2016. Valuation for sale obtained during 2016, £110,000.
3. Types of Funds: Unrestricted/General Funds. Money given to the PCC with no restriction on its use. Designated Funds: The PCC can 'designate' unrestricted money for a particular purpose. This money can be re-designated as 'unrestricted' by the PCC if needed. Restricted Funds: Money given to the church for a specific purpose. The money and any tax claimed from it can only be used for this purpose. Endowment Funds: Money given to the church for investment, where only the income can be spent.
4. The PCC holds a current and savings account with CAF Bank (Charities Aid Foundation). From November 2016 a monthly bank charge of £5 has been applied to the current account. A savings account is also held with Central Board of Finance (CBF). The PCC allow the treasurer to transfer funds between accounts as needed. The treasurer uses online banking. In accordance with the Bank Mandate two signatories sign all cheques. Payments are also made electronically by BACS, set up by the Treasurer and authorised by a second signatory.
5. Cash in Hand: Petty cash accounts maintained by individuals on behalf of their church group/activity and reported to church treasurer at year-end. Play and Praise group, Tuesday Friendship Club, Fusion Youth Group, Flowers, and new for 2016 Men's Group. During 2016 the petty cash account book for the Flowers was mislaid. It has therefore not been possible to include the income and expenditure figures for this fund, just a correcting entry to show the cash balance carried forward to 2017.
6. Gift Aid: Tax reclaimed from HMRC where individuals have signed a gift aid declaration in favour of St Luke's Church. St Luke's is also eligible to claim tax under the Gift Aid Small Donations Scheme (GASDS) on gifts under £20. At the end of 2016 £1176 was due for the general fund and £77 for missions. This was received in January 2017.
7. Liabilities – Agency accounts: Funds held by the PCC at the end of year but due to other parties. At the end of 2016 £318 was held as 'Agency' money, which relates to fees received on behalf of Canterbury Diocesan Board of Finance (CDBF) and was paid out in Jan 2017.
8. Liabilities – Creditors: Amounts falling due in one year. The accounts show a figure of £8632 from the general fund. In early 2017 the PCC agreed to pay the outstanding Parish Share for 2016 of £8632. This amount is shown in the general fund for 2016 although the payment was not actually made until Jan 2017.
9. Transfers between funds: A total of £17,369 was transferred from other funds to ensure full payment of general fund expenditure including the Parish Share. These were as follows.

£113 from Social Fund to new Church Building Fund (CBF)
£1,431 from Development and Building Fund to CBF
£483 from reserve Fund to CBF
£2,973 from Maintenance and Development Fund to CBF
£6193 from Reserve Fund to General Fund
£3,199 from Hall fund to General Fund
£3,617 from Gift Day 2016 to General Fund

£402 from Gift Day 2016 to CPAS as tithe
£4,360 from Church Building Fund to General Fund

10. Mission money: Is collected throughout the year for the various missions supported by St. Luke's. Where gift aid declarations have been signed, tax is reclaimed. The donations and tax are forwarded to the mission societies once or twice a year. At the end of 2016 £1165.41 of mission money remained in our accounts and will be paid out in 2017. The total amount paid out during 2016 totalled £6,436 This would include some funds given in 2015, the Sunday Club collections and the Harvest project for Compassion UK of £2,203.
11. Mission: Sponsor a Child. This is the Sunday Club collection to support a child in The Philippines through Compassion UK. It costs £25 per month and at the end of 2016 the fund had a deficit of £96.74. The PCC is aware of this position and Sunday Club leaders remind the children about donations when they pray for the child. The PCC agreed during 2016 to cover any shortfall for this fund and look at ways to increase giving.
12. Christmas Unwrapped: At the end of 2016 the PCC accounts held a fund of restricted money in this name. This was a joint initiative between some Thanet churches, to bring the true meaning of Christmas to primary school children. The income and expenditure will be resolved in 2017.