

St. Luke's Church, Ramsgate.

Annual Report

for the year ended
31st December 2015



Welcome to the St. Luke's 2015 Annual Report. Inside you will find lots of information about our church and all that God has been doing with us during the year. You will find much to celebrate and read about some new initiatives we have tried. Alongside much that is positive you will find some challenges including our financial struggles.

Do join us on Sunday 17th April for our Annual Parochial Church Meeting to find out more and hear about our plans going forward. If you want to take a more active role in the oversight of the work of St. Luke's why not also consider standing to become a member of the PCC, there are at least 4 vacancies at present.

Finally, do use this report as a guide to your prayers. Please pray that God will continue to work through St. Luke's to share his gospel in the years ahead.

Paul Worledge (Vicar)

Contents

| | |
|----------------|---|
| Page 2 | Reference and Administrative Information |
| Page 5 | Achievements and performance |
| Page 10 | Minutes of last year's APCM |
| Page 11 | Reports |
| Page 13 | Financial Report and 2015 Accounts |

Church Address:

St Luke's Church
Corner of Hollicondane Road,
Ramsgate
Kent

Independent

Examiner:
Mr. Peter Cottington
81 Dane Crescent
Ramsgate CT11 7JS

Church Office: (part time)

St Luke's Church Hall
St Luke's Avenue
Ramsgate
Kent
CT11 7JX

Bankers:

CAF Bank Ltd.
25 Kings Hill Avenue
Kings Hill
West Malling
Kent
ME19 4JQ

CCLA Investment Management Ltd.

The CBF Church of England Funds
80 Cheapside
LONDON
EC2V 6DZ

Reference and administrative information

St Luke's Church is situated on the corner of Hollicondane Road and St Luke's Avenue, Ramsgate. It is part of the Deanery of Thanet, in the Diocese of Canterbury, within the Church of England.

The Parochial Church Council was registered with the Charity Commission on 25th October, 2010. Registration No: 1138535.

PCC members who have served from 1st January 2015 until the date this report was approved are:

| | | |
|-------------------|---------------------|----------|
| <i>Incumbent:</i> | Rev. Paul Worledge | Chairman |
| <i>Wardens</i> | Mr. Andrew McMillan | |

Representatives on the Deanery Synod:

| | |
|----------------------|----------------------------------|
| Mr. John Neden | |
| Mr. Matthew Kenney | (Until September 2015) |
| Mr. Peter Shakeshaft | (Appointed by PCC, January 2016) |

Elected members:

| | |
|---------------------|-------------------------|
| Miss Joy Brenchley | (Secretary) |
| Mrs Pauline Emptage | |
| Mrs. Hazel Kenney | Treasurer (Co-opted) |
| Mrs Anne Marsh | |
| Mr. David Perkins | |
| Mr Peter Shakeshaft | |
| Mrs Audrey Tucker | |
| Mrs Janet Harley | (Until April 2015) |
| Capt. Peter Bone | (Co-opted January 2016) |

Aims and Purposes

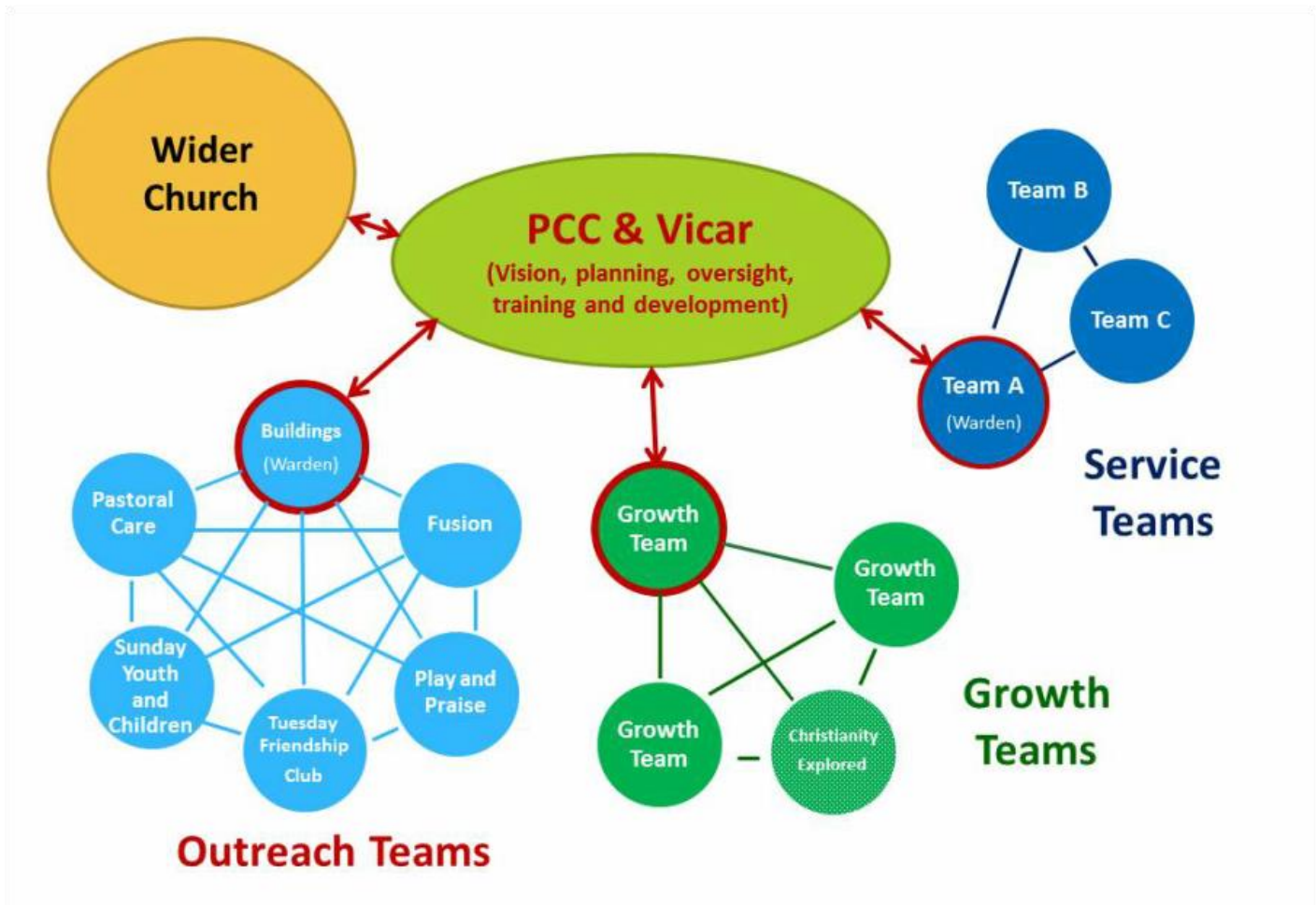
St Luke's Church PCC has the responsibility of co-operating with the incumbent, the Revd Paul Worledge, in promoting in the ecclesiastical parish the whole mission of the Church, pastoral, evangelistic, social and ecumenical. It also has responsibilities for the maintenance of the St. Luke's Church building and Church Hall. The hall is situated next to the church building in St. Luke's Avenue, Ramsgate.

Objectives and activities

The PCC has overall responsibility for maintaining the worship at St Luke's. The PCC continually assess the services available and make suggestions for ways to involve people within the parish. The PCC has considered the Charity Commission's guidance on Public Benefit with regard to the advancement of religion. In this respect, the PCC maintains both the Church building and the Hall. Awareness of religious belief is encouraged through regular services which include teaching, reading scripture, prayer and music. Teaching is provided for children both within the church, and through local schools. The PCC seeks to provide information of its services on a regular basis to those within the parish. Church members are encouraged to live out their faith within the community through: worship and prayer, visiting the sick, providing pastoral care, and missionary and outreach work.

Structures for Growth, Care and Oversight at St. Luke's:

Below is a chart showing the network of supportive relationships between the key leaders and decision makers in the church. The Outreach Team leaders, Growth Team leaders and Service Team leaders all meet together regularly to pray for, encourage and support one another. These meetings are also used for planning and training. We try to ensure that each of these networks of leaders is also represented on the PCC, so that our decision making is informed and shared with the active parts of our church. We also recognise that we are part of the wider Church and try to ensure that we are networked with them, both through mission links worldwide and through networking with other local churches. For details of the role of the PCC and the different groups, please see the information below the chart.



PCC of St. Luke's

The PCC is the Parochial Church Council of St. Luke's church. Members include the vicar and those elected at the Annual Parochial Church Meeting by those who are on the church electoral roll. It has responsibility to oversee the running of church life and the churches mission in collaboration with the vicar and a legal responsibility to oversee the upkeep of the church buildings and the running of the church finances.

PCC Policies

As well as setting a budget each year, the PCC annually reviews a number of policies to ensure that we are meeting our legal responsibilities to care for the people who we work with. These include:

- Parish Safeguarding Policy
- Health and Safety Policy
- Data Protection Policy

Outreach Teams

It has been said that, 'The church is the only organisation that exists for the sake of others.' Our Outreach Teams are set up to enable us to serve particular sections of our local community, but as we build relationships with wider groups of people we also hope to be able to share the greatest treasure we have: the good news of Jesus Christ.

Here is a list of our Outreach Teams (Click on the headings for more details):

Play and Praise: We run a group on Friday mornings for parents / carers and their babies or toddlers.

Fusion: We run a group on Friday evenings for those in school years 6-11.

Tuesday Friendship Club: This is on Tuesday afternoons in the hall. All are welcome.

Pastoral Care: As well as working to promote care and support within our church, this team also organises welcome events for new members, the collection of food for our local food bank and monthly services in one of our local care homes.

Buildings: We long to use our buildings as places for the local community. This team works to ensure our buildings can continue to provide that resource in a safe way.

Sunday Youth and Children: As part of our Sunday morning service we offer groups for children aged from 0-14. This requires a dedicated team of leaders and helpers who work to provide fun and engaging teaching about the Christian faith for our youngster

Growth Teams

As a church we want people to grow in their faith so that they are better equipped to live for God and grow into a deeper relationship with God. Obviously we try to do this on Sunday mornings, but we also have groups that meet together during the week to encourage, support and pray for each other. As part of their time together the teams do some deeper study on the topic for the previous Sunday.

Every now and again we run a course called, Christianity Explored, for those who are new to the faith or are interested in finding out more about Christianity. [Click here](#) for more information on Christianity Explored or to express interest in attending a course.

Service Teams

The church is very reliant on the willing help of Christians who want to serve one another. For our Sunday morning services to run effectively we need a team of people to carry out a number of different tasks.

In 2015 we introduced a rota of Service Teams to cover these tasks. Each team is on once every three weeks. They meet at 9:50am for prayer before setting up for the service or welcoming people into the church.

Each team aims to support one another in this important task and provide a warm welcome for everyone who joins us on a Sunday morning.

Achievements and performance

Sunday Services

Services are provided on a Sunday at 10.30 a.m. and 6.30 p.m. There is also a 9.00 a.m. Holy Communion service following the Book of Common Prayer, on the first Sunday of each month. On the third Sunday of each month the 10.30am service is a family communion service, and there are also evening communion services twice a month.

Pastoral Services (Baptisms, Funerals and Weddings)

In 2015 there were 9 funerals taken by the vicar. None of these were in church.

There were seven wedding services held at St. Luke's. In March a special event called, 'A Space to Think' was held for those being married at St. Luke's to help them think through the meaning of their marriage vows and their future lives together. There were also two services of Renewal of Vows held in church and the vicar took another wedding service in St. Lawrence College Chapel.

In June six members of St. Luke's were confirmed at St. Mary's church, Minster. All the candidates had been through a Christianity Explored course and a confirmation preparation course.

11 children were baptised during our normal Sunday morning services. When a child is baptised the parents and sometimes the godparents receive baptism preparation during a couple of home visits.

Special Events in 2015

Experimental June

In June 2015 we held a series of three experimental services at our normal 10:30am slot:

- Messy Church
- Multi-Media Church
- Café Church

Those who attended were asked their views on what we had tried and we had a follow up Sunday lunch to discuss what had taken place.

We decided to continue with our normal services, but sometimes incorporating some of the ideas of Multi-Media Church in the services and to have a Messy Church at 10:30am about three times a year and similarly a Café Church at 10:30am about three times a year.

How to like the Old Testament Again

In November 2015 on Tuesday evenings in church we held four sessions called, 'How to Like the Old Testament Again.' These were led by Robin Plant and considered how we should best read and understand some of the different genres in the Old Testament.

We invited people from other churches and the sessions were very well attended with over 25 people each week. We hope to do something similar in 2016.

Merry Opera's Handel's Messiah

Also in November we hosted the Merry Opera performing their version of Handel's Messiah in St. Luke's on a Saturday evening. Again this was open to the public generally and was well supported – even being enhanced by fireworks being let off in neighbouring gardens!

Children's Work *(Anne Marsh)*

St Luke's Sunday Club currently has 29 children enrolled with several more children who have attended on Brownie Parade Sundays or as visitors (eg Baptisms). The Sunday Club is divided into three groups: Scramblers (Reception and the year before). Climbers (years 1 and 2). And Discoverers (years 3, 4, 5)

Our main aim is to help the children understand God's word, His amazing gift to us all of Jesus, His Son, plus His surpassing love for all people, especially children.

We have a approximately 45 minutes during the weekly service for Sunday Club.

We all meet in the Vestry for a short sharing of news and sharing of what we are thankful to God for during that week. The children are encouraged to pray out loud at an early age so this becomes natural to them. We split into our different groups and spend 30 minutes on Bible teaching, discussion and linked craft activities. For the younger children, we have introduced story sacks and story boards to help them be an active part in their Bible learning. We have taken on our new Compassion child. The groups are encouraged once a month to think about what his life is like and to write a short letter to help our designated leader to compile a package to be sent to him. We pray regularly during our prayer time for him to grow in Gods love,

We have had a number of leaders and helpers leave due to sickness and family commitments. Our co-ordinator is going to take a 6 month break due to health issues. During this time a meeting with the leaders will be held to discuss and share ideas to implement a way forward and to maybe review how we can improve on our current practice.. We live in the certain hope that God will steer us in the right direction on all things.

Sparklers *(Fiona Worledge)*

Children aged 0-3 currently meet in the church hall. We follow the same structure every week which enables small children to pick up on a routine and feel that they know what will happen next. Every week we have a Bible story, craft, songs and prayers. It is a privilege to introduce young children to Jesus, but we see ourselves as supporting the work that parents are already doing in the home.

Play & Praise *(Fiona Worledge)*

Play and Praise is a parent and toddler group which meets on Fridays 10.00-11.30 during term time. The children have time and space to play with other children. There is always some kind of craft, a Bible story/theme and a prayer that we all say together.

We ask for £2.00 a week per family, and this pays for the food needed for snack time, coffee, tea, craft materials and gifts for the children at Christmas and Easter. This Easter the children will receive a "Real Easter Egg" from Traidcraft which tells of the Easter story. Last year Play and Praise donated a total of £600.16 to the Church Hall fund, Kent association for the blind, Crohns disease and children in need.

The group continues to be well attended and we aim to share the love of Jesus with everyone who comes. Play and Praise provides an important link between community and church with many of the families also coming to church. We thank God for all the encouragements we have had and look forward to another year serving Him.

Fusion (*Lekan*)

Fusion is our Youth Group for Year 6 school pupils and upwards that meets on Friday evenings from 7:45-9:30pm in the Church Hall. There is a mixture of fun activities for individuals and groups to do from table tennis to a Wii etc., some Christian teaching done in a fun and interactive way and a big game for all. Fusion runs during term-time.

There is a team of 7 leaders who meet at the vicarage by 6pm every Friday to plan and prepare for the meeting. However, due to work commitments we often do not have all leaders every week but enough to take care of the youngsters.

Two of our long standing and committed leaders Matthew and Charlotte have moved on to further their career and studies. We appreciate their contribution to the success of Fusion over the years as we continue to remember them in our prayers. (The Fusion Family wishes them all the best).

We welcomed two new leaders to the team, Charlie and Tilly

Key milestones:

- January to October 2015 we averaged around 35 to 40 youngsters per week. These were not just church goers but youngsters from the parish.
- Between September and December 2015, over 60 youngsters signed up to come along to Fusion
- A 'Carousel method' of teaching was introduced during the summer which is yielding desired impact and engaging the youngsters. It is composed of the following segments: -Introduction, Carousel (Game, exercise, video), and discussion together, Talk (conclusion) by the Vicar.
- We also took the youngsters to several offsite activities during the year : Rock climbing at Revolutions, laser-quest at Quex park, laser- tag at bumble bee etc
- We have updated the tuck shop to make available more variety of snacks and drinks for the youngsters.
- The end of year talent show 'Fusion's Got Talent' has remained popular and successful with great prizes

At the moment we are trying to replace some of our outdated equipment to keep it a lively.

We continue to ask for your prayers and support as we continue spreading Gods message.

Tuesday Friendship Club (*Fay Hatton*)

This is our 1st full year of meeting and how fast it seems to have gone.

Although we have so far had 3 new members coming fairly regularly besides the ones we have continued from the original Women's Fellowship, we still would like to attract more people from the neighbourhood, to become regulars and so allow us to show Christ's love to them, and pray that they will want to learn more about God and his love for them,

The committee consists of Audrey the treasurer, Fay the leader, Jean Hann and Norah Norman, who had Pam Hyde as a tea-bar helper. Pauline MacKinny joined us later in the year and taught us how to make assorted cards, which we enjoyed doing especially for Christmas which helped to earn us some money.

We were delighted that we could hold a Saturday fayre which though not many came, still netted us £235 towards church expenses, with a further £35 for the Ramsgate Lifeboat Charity and £21 towards our own funds. Also during the year some members were able to make some blankets for the local Cats in Crisis charity, whilst Pauline made and sold assortment of articles to help build up some funds. At the Saturday fayre Norah produced and exceptional amount of items on her stall, the majority of which she designed or made completely herself.

We continued to have a speaker each month such as Paul our Vicar, Joy Smithers telling us the 1st half of the history of St. Luke's, with others who spoke about Firefighting, a demonstration on cake decorating and making marzipan sweets beside other interesting subjects.

We finished the year with a carol service with Paul giving us an enlightening talk on the meaning of Christmas, which was enjoyed by all.

Fay

Growth Teams Report

Throughout 2015 Growth Teams have met to pray, encourage one another and discuss the sermons on the preceding Sunday, some teams meeting weekly, some fortnightly. Four groups are currently meeting (Tuesday evenings, Wednesday mornings, Wednesday afternoons and Thursday mornings). Here are some comments from one of our Growth Teams:

WEDNESDAY MORNING GROWTH TEAM (2015 report)

Our Growth Team has eight regular members and room to welcome more to our group. We meet weekly throughout the year (except during August) and we thank God for the privilege of meeting together in His name.

We have been able to help and sustain each other through studying God's Word, sharing the needs and joys of our families and friends, through much prayer and loving support. We rejoice in Jesus' wonderful example of love and are honoured to be able to support 'Tearfund' as they work amongst suffering people throughout the world. We praise God for His wonderful love and pray His Holy Spirit will continue to guide us and help us grow closer to Him and to one another. We pray God will enable us to be bold and use the opportunities He gives us to share our faith with others.

Here are some comments from members of the group about what the meetings mean to them:

'I consider the time we spend together well spent. I learn a lot and so do the whole team but more than learning, we have a group of people that gel together in love and in companionship; we comfort and respect each other and are there as a group to help each other in many different things but always in the love of Jesus Christ.'

'I have found that at this Group we are encouraged in our Christian Life and Devotion, along with the prayer time, which is very encouraging and also allows us to speak freely about our worries and also about our joys.'

The messages from Sundays help us to put God's Word into practice in our daily lives.'

We take God's Word from 2Thessalonians 2:16, 17 with us into 2016 praying that God will help us to spend more time in reading, studying and memorising His Word so that we will be better equipped to spread His Word and encourage others to come to Christ Jesus as He graciously guides us by His Holy Spirit.

'May our Lord Jesus Christ himself and God our Father, who loved us and by his grace gave us eternal encouragement and good hope, encourage your hearts and strengthen you in every good deed and word.'

Prayer Groups

Prayer is seen as being of utmost importance in the life of St Luke's Church. As well as the prayers said during our church services and Growth Team meetings, there is also an extra weekly prayer meeting and a prayer time before the beginning of the church service on a Sunday morning. The weekly prayer meeting moved from Saturday morning to 3:30pm on Thursday afternoon. This has allowed more people to attend. All are invited to join us at any of these prayer meetings.

Pastoral Care Team

The Pastoral Care Team meets once every two months, It's aim is to consider the wellbeing of the church members. It considers attendance, new members and those who may leave. It also thinks of those who may need a home visit for any reason.

The team organises welcome parties for new church members and social events where they can get to know the church family. We organise quiz nights, a forthcoming beetle drive and various lunches, suppers etc.

We have started to help people with lifts to church services on a rota basis if any car drivers could volunteer to give lifts on a one off or regular basis to church. Please see a member of the team.

We take Communion to the Ramsgate Care Centre once a month and organise the collecting and delivery of food to the Thanet Food Bank. This food is very welcome.

Our committee is Paul (Vicar) Fiona, Joy Brenchley, Trevor and Audrey Tucker. If any member of the church would like to know more or volunteer in any way, please speak to one of the team.

A. Tucker

World Missions Supported

It is the policy of the PCC that each term provides both prayerful and financial support for one of its designated mission societies. Members of the church are also given the opportunity to financially support these missions in a 'planned' way throughout the year. Tax is reclaimed, where Gift Aid declarations have been completed, and the proceeds sent to the relevant society usually twice a year.

During 2015 we supported the following missions:

- Fegans
- CPAS
- CMS – The Seeds
- Greg & Sylvia Venables
- Compassion – Children work support
- Bible Society
- Tearfund
- Vernon Wilkins
- Our Harvest collection was for out Tearfund *Connected Church Project*, Self-Help groups run by the Kale Heywett church in Ethiopia.

Dick and Caroline Seed

It was great to have Dick and Caroline visit us in July and share what is happening with their ministry in theological education in Kenya.

Greg and Sylvia Venables

Greg and Sylvia Venables joined us in September and Greg preached an inspiring message at our main Sunday service.

Compassion

Also in September we had a visit from Ian Childs and his team from Compassion, which was the subject of our Harvest Appeal for 2015. A few families began sponsoring children from a project in Philippines and because the child that our Sunday School had been supporting had now graduated the Sunday Club took on a new sponsored child called John, also from the Philippines.

Website

At the end of 2014 we gave the Church Website a major overhaul, switching to *Weebly* as our website platform. This has proved much easier to use and update than the old platform.

The website provides information about all our activities along with contact details, the ability to access our weekly newssheet and recorded sermons. It also links to a church Facebook page and Twitter account.

Minutes of the Annual Parochial Church Meeting held on 7th April 2015

1. Minutes of the previous meeting were accepted, with no matters arising.

2. Review of 2014:

The vicar led a discussion on how people felt 2014 had gone.

- Do we put Sunday services in local paper.
- Do we publicise all the groups well enough?
- Are the services team too small? Involving people - better to keep to three teams? But, less pressure on leaders if more teams.
- How aware are people of the Pastoral Care Team?
- Lack of volunteers - more help needed.
- Reminder to count mission boxes 2x a year

3. Elections:

- a. Andrew McMillan was the only person to stand as Church Warden and was duly elected.
- b. Joy Brenchley and Pauline Emptage were the only people to be nominated to the PCC and were duly elected unopposed.
- c. Peter Cottington was thanked for his work as our Independent Examiner and duly appointed for 2015.

4. Vision & Aims:

The vicar shared the PCCs work on the Vision 2020 document. The PCC had had a Saturday away to discuss and plan and come up with a 5-year vision of where we want to be by 2020. They had also then developed some specific aims for 2015/16. The Vicar led some discussion on the vision and aims and the following comments were made:

Vision 2020:

- Have variety on Sunday mornings
- Youngsters doing more in the church an encouragement
- Don't be scared of change
- All exciting and achievable
- PRAY! Pray to follow God's call.
- I can with God's help.
- Exciting and frightening... Changes of structure...
- Exciting and challenging. Need for sharing.
- The last point is crucial.
- Need for informal networking between churches.

Aims for 2015/16:

- Like children involvement
- It's good to experiment... In Growth Teams etc.
- When the children come back ask them what they were doing.
- Have extra people for baptism
- Sort out the back of the church to look better and be a better space
- Designated area for the children?
- Need to do more in the community to reach out... cf. TFC.
- A banner for TFC...
- Better use of noticeboard...
- Open prayer in services?

Reports

Electoral Roll

This year 3 names were removed from the electoral roll and 12 names were added. The number on the electoral roll now stands at 78 of whom 32 are resident within the parish.

Deanery Synod Report

2015 saw a lot of activity in the life of the Deanery, which is the organisation working across the Church of England churches in Thanet. There a couple of Deanery Lent talks by the Bishop at St. Mark's, along with the normal Deanery Synod meetings. At these the Deanery decided to stop using its own method of allocating Parish Share and to leave it to the Diocesan system instead.

Significantly, the Deanery set off on a process called, *The Conversation*, where representatives from churches in each of the four areas (Margate, Broadstairs, Ramsgate and the Villages) were asked to meet for facilitated conversations looking at both specific questions for their area set by the Bishop and to discuss the general way forward for their area in the light of some upcoming challenges. These included the decreasing number of clergy available, the struggle to pay our way financially and the question as to whether there were too many church buildings.

In Ramsgate one of the questions was whether St. Mark's, who can no longer afford a full-time vicar, should be linked with the St. Laurence Team or St. Luke's. In the end the decision was made that they should be linked with the St. Laurence Team. There was also a view that there should be an 'outer Ramsgate parish' (basically the St. Lawrence Team and St. Mark's) and an 'inner Ramsgate parish'. However, there is still a long way to go to decide whether and how an inner Ramsgate parish might work.

The Church Army funded Thanet Centre of Mission went through a key personnel change with the departure of Andrew Chadwick in January and the arrival of Peter and Lynne Bone in September. Their Deanery licensing service was held at St. Luke's. They and Stuart Budden are working together on initiatives to promote and encourage evangelism across the Deanery.

Also, in October 2015 Paul Worledge, St. Luke's vicar, finished his time as Area Dean after a six year stint. The new Area Dean is Andrew Jacobson, the Priest in Charge of the St. Laurence Team.

Paul Worledge, Vicar

PCC Secretary's Report

During the year there have been regular meetings of the PCC and hard facts have to be borne in mind. Churches are largely dependent on the Clergy. In the Thanet Deanery 40% of the Clergy will retire within the next 10 years. Congregations are also ageing as are the buildings which, therefore, mean that there is a large cost for maintenance.

Problems with our own Church buildings were discussed and quotations obtained for various repairs, particularly for the roof and for the window in the Perry Room for which there would be a cost of £800 as it will need a new lintel.

Aims for 2016/ 17 were considered. It was noted that there had been a small growth in the members attending Growth Teams but encouragement was needed for further growth. The November Old Testament Study Group led by Robin Plant was appreciated by everyone. It was noted with pleasure that 10 members of the Church family were confirmed earlier in year. Attendance at prayer meetings had been less encouraging. Vision 2020 has also been borne in mind and some progress is being made.

Joy Brenchley, PCC Secretary

St Luke's Church Fabric Report for 2015

This report should be read in conjunction with the current Quinquennial report, which was carried out in 2012

The following building and maintenance works were carried out during 2015:

1. Gas heating and equipment inspection and service.
2. Repairs and white washing to inner church wall plaster (north side) as a result of previous water ingress.
3. Exploration of a problem with a purlin connection into a principal rafter in the roof. We are still waiting further advice on next steps, although the current situation has existed for some time and is not currently presenting any danger.
4. Reviews were undertaken for Control of Substances Hazardous to Health (COSHH), St Luke's Health & Safety Policy, Protection of vulnerable children and adults policy, Data Protection policy and all Risk Assessments.
5. Chris Tull continues to be employed in the post of Gardener & Maintenance Worker.
6. A new ladder was purchased and is proving to be much safer to use.
7. Portable electrical testing was completed.
8. Area Deans Visitation was completed in July with positive feedback received for our record keeping at St Luke's.
9. Arrangements have been put in place to repair the lintel and window frame in the Perry room, although this work has not yet actually been started.
10. A day was arranged in November for a contractor working with Chris to replace light bulbs and fit a new movement sensor light next to the office in the church hall.
11. A repair to the floor boards in the church hall was completed.
12. A clear out day was held at the rear of the Church to improve after Church refreshments area, children's area and the side Isles.

At St Luke's we do thank God for the work of all volunteers and staff, Caroline and David Perkins, Chris Tull and the various contractors that have helped keep our buildings and grounds clean and tidy, maintained and improved as well as safe and welcoming.

We ask through our prayers that as we look to the work required in 2016 we are blessed with volunteers, finance, energy and enthusiasm to maintain the buildings and grounds that provide a venue for Your Church to meet together and praise You, our Provider.

Andrew McMillan, Church Warden

Hall Report

2015 has been another positive year. There has been a reasonable amount of private hires for outside functions, but there has been a small decline in the amount of children's parties, compared to previous years.

The regular hirers of the hall have remained very positive generating a good income for the hall.

It has been a blessing to see the Perry room being put to much more use, with Growth Teams, Christianity explored, Faith Pictures and other meetings being held here. We also generate some income from the lace making class which use this room for 6 week blocks twice a year.

Pauline Emptage.

Financial Report 2015

The financial statements of the Parochial Church Council PCC have been prepared using the Receipts and Payments basis.

In October 2015 the accounting procedures of St Luke's were scrutinised by Jeff Green, Diocesan Management Accountant. The purpose of this visit was to check our book keeping as it relates to the legal requirements for claiming Gift Aid. Some minor tweaking was suggested but no major problems were found. The Diocese intends to repeat this process every three years.

The PCC holds both a current and savings account with CAF bank (Charities Aid Foundation). There are no day-to-day charges. Both accounts allow immediate access to funds and money can be transferred between them quickly and easily. Additionally the PCC holds a savings account with the Central Board of Finance (CBF), which also allows immediate access. The PCC allows the Treasurer to transfer between bank accounts as required. The Treasurer uses online banking for up to date information on the accounts and in 2013 the PCC authorised the use of online banking to make payments using the BACS system. This means that payments can be made quickly and easily into bank accounts avoiding the need to write and post cheques. All payments made by the Treasurer (both written and electronic) are authorised by a second signatory.

Petty Cash Accounts

To enable to smooth running of a number of activities within the church, four petty cash accounts are held. These are maintained by individuals and reported annually to the treasurer. These are: Play and Praise group, Tuesday Friendship Club, Fusion Youth Group and the Flowers. These accounts are included in the annual church reports.

General Fund

This fund includes all transactions concerned with the day-to-day running of the church, church building, the cost of running the services, outreach and both adult and child training. Our largest commitment is the Parish Share, paid to Canterbury Diocese. This covers the cost of our vicar and contributes to various Diocesan expenses. In 2015 our Parish Share amounted to £49,800 and was paid in full. Total expenditure on the General Fund for 2015 amounted to £66,660. The total income to the General Fund for the year amounted to £58,325. This left a shortfall of £8,335 for the year. The PCC agreed that this would be covered by transferring funds from the Hall Fund, Reserve Fund and Gift Day 2015. This means the General Fund starts 2016 with a Nil balance.

Gift Aid

We are very grateful to those donors who have signed declarations allowing us to reclaim tax on their donations. During 2015 approximately £6780 was reclaimed from HMRC, for the benefit of the General Fund, with additional sums being reclaimed for the benefit of the mission societies we support. Gift Aid can be claimed on donations given by people who pay income tax and have signed a declaration allowing us to do so. Since April 2013 it has also been possible to claim tax on small anonymous gifts under £20 through the Gift Aid Small Donation Scheme (GASDS). A total of £793 was received from this source during 2015.

Reserves Policy

It is the responsibility of the PCC to hold a reserve fund to cover everyday expenses and we aim to hold around three months of normal expenditure. Based on the expenditure for 2015 a three-month reserve would be around £16,000. Having used the Reserve Fund to offset the deficit in the Church Expense Fund at the end of 2015, the Reserve Fund balance now stands at £6676.

Additionally it has been the policy of the PCC to build up the Maintenance and Development Fund (M & D) (unrestricted) to provide a fund for potential repairs. It has not been possible to add to this fund in 2015. Following payment of the final stage of plasterwork repairs near the kitchen area at the back of the church, this fund now has a balance of £4109.82.

Mission

St. Luke's continues to encourage people to give financially towards the needs of Christian partners in this country and abroad. Each term a different mission organisation is supported both prayerfully and financially. Gifts can be made through the box at the back of the church. Many people now choose to support mission regularly with a monthly standing order. Additionally, many people hold mission boxes in their homes for loose change, which are collected and counted twice a year at St. Luke's. These boxes can be for a specific mission organisation or for our general mission fund. The general mission fund is divided equally between all mission organisations supported by St Luke's. Where donors have signed a Gift Aid Declaration the gift is increased further through reclaimed tax. During 2015 we received donations and tax totalling £5342.11 for mission. This figure includes our Harvest giving for Compassion (£892.04), the tithe from our Gift Day, which is given to our Patrons CPAS (£172.17) and a collection via Tearfund, for the Nepal Earthquake appeal (£294.70). The Sunday Club support a child through Compassion which costs £25 per month. Some of the money raised for Mission will be forwarded during 2015.

2015 and onwards

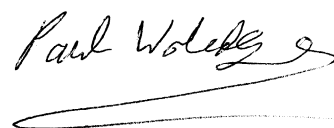
It was clear from the budget set by the PCC at the end of 2014 that 2015 would be a financially challenging year for us. Even with increased giving promised following the Commitment Sunday at the end of 2014 a large deficit was anticipated. A further call for prayerful donations and ongoing support at the end of 2015 provided a further boost to our income but a deficit on the church expense account of £8335 still remained. We were also not able to add to the maintenance and development fund as intended. The good news was that we managed to pay our Parish Share to the Diocese in full.

It was hoped that the Commitment Sunday in 2015 would result in significant increased giving for 2016. The PCC budget for 2016 anticipates expenditure of £69,918, against expected income of around £45,000. This means we are looking at a deficit of around £25,000 at the end of 2016 unless further regular giving or substantial donations are received. Unfortunately, we are very limited in ways to cut our expenditure to try and address this shortfall.

Please continue to pray about the financial needs of our church. If you would like to know more about joining our Planned Giving scheme (either through the use of weekly envelopes or monthly bank standing order) please have a word with me at any time, or contact me by phone on 01843 585350, or email hazelkenney@btinternet.com. Information packs are also available at the back of the church. If you are a taxpayer, and have not yet signed a Gift Aid Declaration, please consider doing so. Forms can be found at the back of the church.

Hazel Kenney
Treasurer to the PCC

St Luke's Church Ramsgate Accounts were approved by the PCC on Sunday
10th April 2016 and signed on its behalf
by Revd. P. Worledge (PCC Chairman).



Independent examiner's report to the PCC of St. Luke's Church Ramsgate

This report on the financial statements of the PCC for the year ended 31 December 2015.

Respective responsibilities of the PCC and the examiner

As members of the PCC you are responsible for the preparation of the financial statements; you consider that the audit requirement under section 144 (2) of the Charities Act 2011 does not apply and that an independent examination is needed. It is my responsibility to:

- Examine the financial statements under section 145 of the 2011 Act
- Follow the procedures laid down in the general directions given by the Charity Commission under section 145(5)(b) of the 2011 Act; and
- State whether particular matters have come to my attention

This report, including my statement, has been prepared for and only for the charity's trustee as a body. My work has been undertaken so that I might state to the charity's trustee those matters I am required to state to them in an independent examiner's report and for no other purpose. To the fullest extent permitted by law, I do not accept or assume responsibility to anyone other than the charity and the charity's trustee as a body for my examination work, for this report, or for the statements I have made.

Basis of this report

My examination was carried out in accordance with the General Directions given by the Charity Commission. An examination includes a review of the accounting records kept by the PCC and a comparison of the accounts with those records. It also includes considering any unusual items or disclosures in the financial statements and seeking explanations from you as trustee concerning any such matters. The procedures undertaken do not provide all the evidence that would be required in an audit, and consequently I do not express an audit opinion as to whether the financial statements present a 'true and fair view' and the report is limited to those matters set out in the statement below.

Independent examiner's statement

In connection with my examination, no matter has come to my attention:

- (1) which gives me reasonable cause to believe that in any material respect the requirements to keep accounting records in accordance with section 130 of the 2011 Act; and to prepare financial statements, which accord with the accounting records and comply with the requirements of the 2011 Act have not been met; or
- (2) to which, in my opinion, attention should be drawn in order to enable a proper understanding of the financial statements to be reached.



P.E. Cottington
81, Dane Crescent, Ramsgate, Kent. CT11 7JS

29 March 2016